

IRISH HOMIES

MARCH/APRIL 2002
€2.50

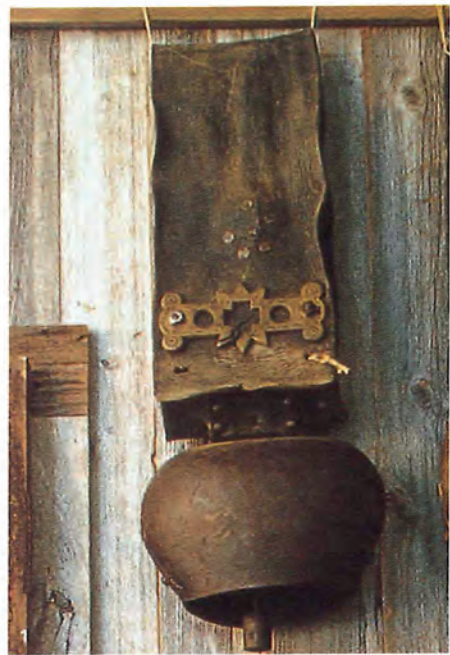
FRESH SPRING LOOKS

REFLECTIVE TEXTURES
IMPACT PRINTS
SLEEK FURNITURE
LACQUERED SURFACES



PALLADIAN-STYLE VILLA IN DONEGAL
INTIMATE ALPINE RETREATS
THE HOME OF FRANCE'S MOST INNOVATIVE DECORATOR





1 Cow bells, old paintings of the Jungfrau views and weathered climbing gear are evocative reminders of the majesty and challenge of the peaks outside the windows. 2 Alpine décor gets a contemporary twist in the bedrooms. 3 At night a red rosy apple is placed on the crispy white pillows in guests bedrooms. 4 The towering peak of the Eiger can be seen from guests windows. 5 A roaring fire awaits the skiers return in the late afternoon. 6 Picture post card conditions are the norm at Wengernalp. 7 Weathered beams, beautifully carved old wood and antique alpine furniture create a sense of security and cosiness in the bar and the Jungfrau Stübli. 8 Urs von Almen takes great pride in the cuisine, bio salmon is imported from Ireland. 9 The Wengernalp railway was constructed in 1910, but the first licence for an inn on this mountain pass was given to Wengernalp in 1834. 10 A vintage photograph of the Sports Trian at Wengernalp testifies to the long history of the area as a wintersports centre.



hotel jungfrau



The day is bright and sunny, the sky a deep blue, the air crispy clean, the light magnificent. The deep snow piled on the Alp stübli roof gives a good indication of the days snow conditions. It would be difficult to find a lovelier place to stay in the alps than the Hotel Jungfrau Wengernalp.

The family have built up a collection of oil paintings of the Jungfrau views which hang in the hall and dining room. In the Jungfrau stübli, a fireplace is open on all sides and has semi-circular chairs and a cosy corner couch surrounding it. When fresh cheeeked guests arrive back from a mornings skiing a traditional mountain lunch can be enjoyed in the Jungfrau stübli, where the towering peaks of the Eiger, Mönch and Jungfrau are framed by the timber windows, or on sunny days this is served outside on the terrace. For variety there is also a cosy Alp Stübli – adjacent to the hotel, where guests can have swiss cheese specialities like raclette and fondue.

The interior is an inviting mixture of rustic simplicity and Alpine antique splendour. There are huge pieces of furniture, for example, tables made of a single slab of spruce four metres long. In contrast, the dining room has a delicate wallpaper and sweet chairs.

In the bedrooms alpine simplicity combines with contemporary leather chairs and lamps to create an unexpected modernity of design.

In the entrance hall, an enormous fire always seems to be lit and the parquet floor with richly coloured runners gives the relaxed atmosphere of an Alpine home. With rugged weather-worn timber beams, carved wooden chairs and an antique cow bell made into a light, the von Almen's, who have owned the hotel for two generations, have created an embodiment of the romantic ideal of a chalet in the snow. Climbing ropes, picks and weathered rucksacks which hang along the corridor between the bar and the Jungfrau stübli are evocative

Infinite attention to detail is a hallmark of the von Almen's approach to hotel-keeping. The teas and soaps are imported from Fortnum and Mason. Even the plates with their cow bell crest have been chosen to create the character of traditional Bernese Oberland.

Hotel Jungfrau, Wengernalp, tel 0041 33 8551622 fax 0041 33 8553069.

